

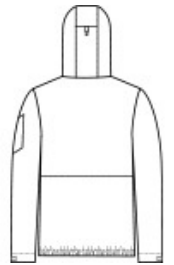


This fully seam-sealed, wind-resistant, insulated jacket offers outstanding waterproof protection to help keep you dry in the stands or on the street.

- 100% polyester with water-resistant face coating
- Jersey-lined body and hood
- 2.4-ounce polyfill insulation in body
- 1.8-ounce polyfill insulation in hood and sleeves
- Polyester taffeta sleeves for easy on/off
- 5000MM fabric waterproof rating
- 3000G/M2 fabric breathability rating
- Tag-free label
- Exposed molded zipper
- No drawcord at hood
- Left arm zippered pocket
- Adjustable self-fabric tab cuffs with hook and loop closures
- Front pouch pocket
- Port Pocket™ for easy embroidery access
- Elastic hem



front



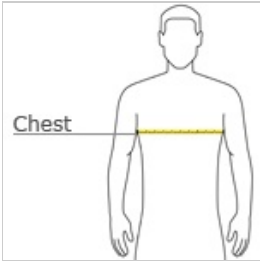
back

\*\*

**CARE INSTRUCTIONS**

Machine Wash Cold With Like Colors Or Separate. Do Not Use Fabric Softener. Non-Chlorine Bleach When Needed. Tumble Dry Low. Do Not Iron.

**HOW TO MEASURE**



**CHEST WIDTH**

Measure under the arm and around the fullest part of the chest with arms down, keeping tape horizontal.

**SIZE CHART**

	XS	S	M	L	XL
Size	4/5	6/8	10/12	14/16	18/20
Chest	22-24	25-27	28-30	30-32	32-34

**COLOR INFORMATION**

